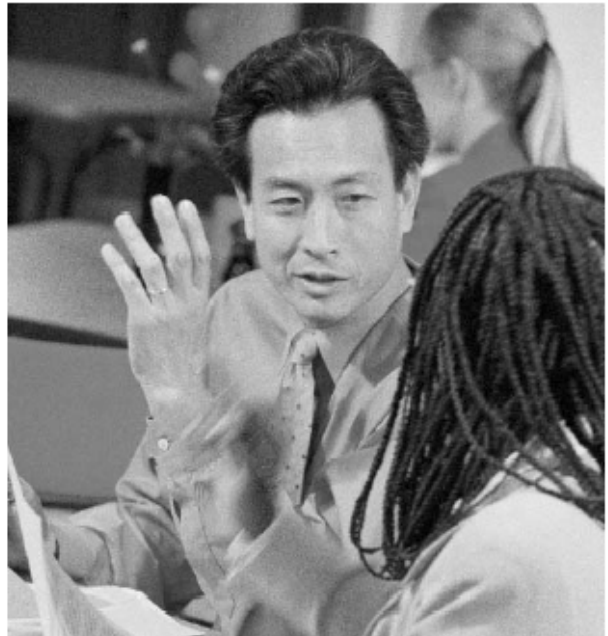


Sage FAS Gov & Sage FAS Nonprofit
2009.1 Feature Update

What's New



Your Guide to New Product Features



Contents

Overview	1
Assets Snapshot	2
Updated Version of Crystal Reports	7
New Sage FAS Community.....	9
Support Ending and Product Incompatibilities.....	10
Support Ending for Novell NetWare Network Edition.....	10
Support for PPT 2700 and PPT 2800 Readers Ending.....	10
Crystal XI Service Pack 4 Incompatible with 2009.1 Tax Update	10

Overview

The FAS 2009.1 Feature Update contains enhancements to your Sage FAS solution, as well as the enhancements from the 2008.2 Feature Update. We're particularly excited about several major reporting enhancements!

The following new or updated features are included in this release:

- **New Assets Snapshot:** Now get an easy, at-a-glance graphical summary of your important fixed asset information. This exciting new feature, available in FAS 100 Asset Accounting and FAS 500 Asset Accounting, gives you instant command over your fixed assets!
- **Expanded FAS Report Writer Capabilities:** FAS Report Writer is now powered by Crystal Reports® XI! FAS Report Writer still offers the same ability to customize built-in Standard reports, but now you can use even more features when creating reports directly in Crystal Reports. Crystal Reports XI offers many new and updated features, such as run-time input parameters, a formula workshop, support for multiple data sources in a single report, charts and graphs, and much more!

Note that with the upgrade to Crystal Reports XI, FAS Report Writer is now delivered on two additional CDs, separate from the Sage FAS product installation CD.

- **Updates to the Asset Database:** We have made behind-the-scenes updates to the asset database so that your 2009.1 Feature Update is compatible with all versions of Sage FAS products. For example, version 2009.1 of FAS Gov/Nonprofit 100 Asset Accounting is fully compatible with the latest version of FAS 100 Asset Accounting, our commercial fixed asset product.
- **New Sage FAS Community.** This new online community enables you to find product-related information quickly and interact with other Sage FAS customers.

The following changes apply to **all Sage FAS products** (including FAS Asset Accounting, FAS Asset Inventory, and FAS CIP Accounting):

- **Support Ending for Novell NetWare Platform.** The 2009.1 Tax Update is the last release supporting the Novell NetWare platform.
- **Crystal XI Service Pack 4 Incompatible with 2009.1 Tax Update.** You must revert to Crystal XI Service Pack 3 for Sage FAS applications to work correctly.

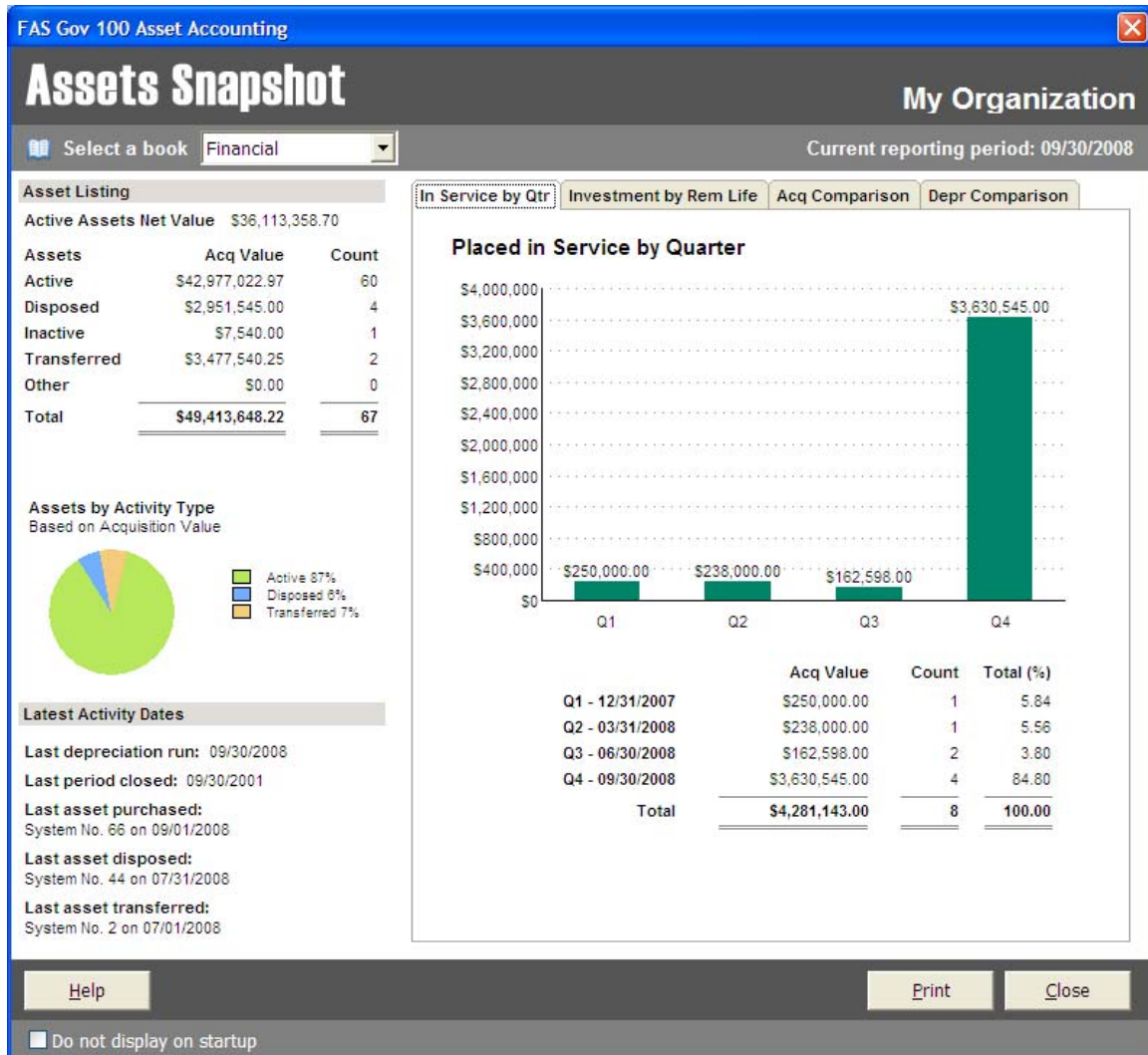
The following change applies to **FAS Asset Inventory**:

- **Support Ending for PPT 2700 and PPT 2800 Barcode Readers.** The 2009.1 Tax Update is the last release supporting these two barcode readers.

Assets Snapshot

The Assets Snapshot provides a colorful, easy-to-read summary of asset information in your Sage FAS organization. Graphical charts and statistics present information in a well organized, concise format. Assets Snapshot appears every time you open an organization, unless you choose not to display at start-up.

You can also view the Assets Snapshot at any time by selecting Assets Snapshot from the Reports menu.



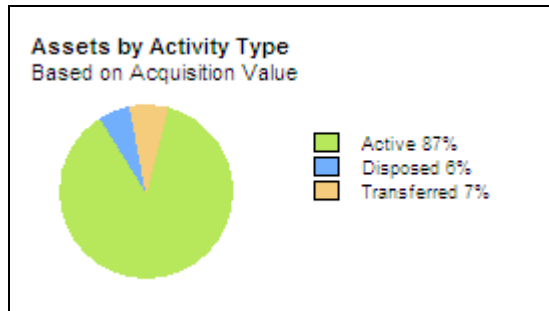
On the left side of the snapshot, you can see the following asset information:

- **Asset Listing:** A table that displays the net value of your active assets, as well as the number of your assets and their acquired values broken down by their current status (active, disposed, inactive, or transferred).

Asset Listing		
Active Assets Net Value	\$2,627,848.35 *	
Assets	Acq Value	Count
Active	\$4,106,952.87	192
Disposed	\$21,851.00	6
Inactive	\$95,000.00	4
Transferred	\$0.00	0
Other	\$0.00	0
Total	<u>\$4,223,803.87</u>	<u>202</u>

* Not all assets depreciated through same date.

- **Assets by Activity Type:** A pie chart showing the relative percentage of total acquisition values based on the assets' activity code status.

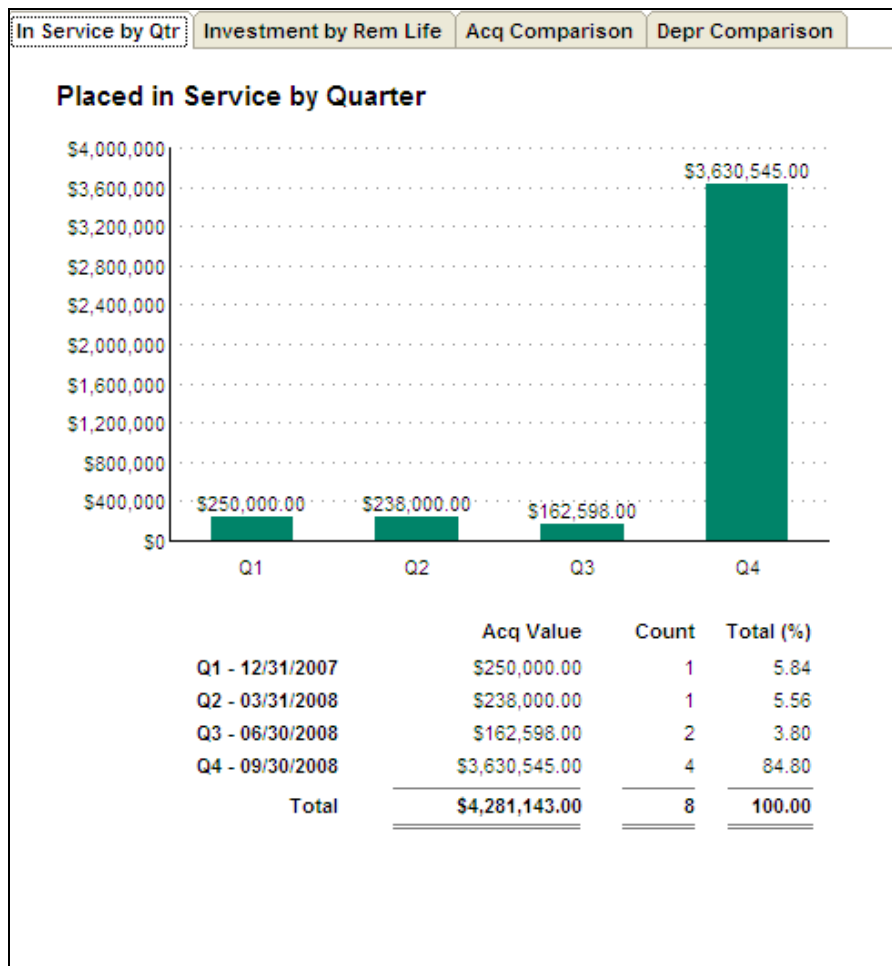


- Latest Activity Dates:** This section displays the latest date that various activities occurred, such as the last time depreciation was run, the last time you performed a Period Close, and the last time an asset was placed in service, disposed, and transferred.

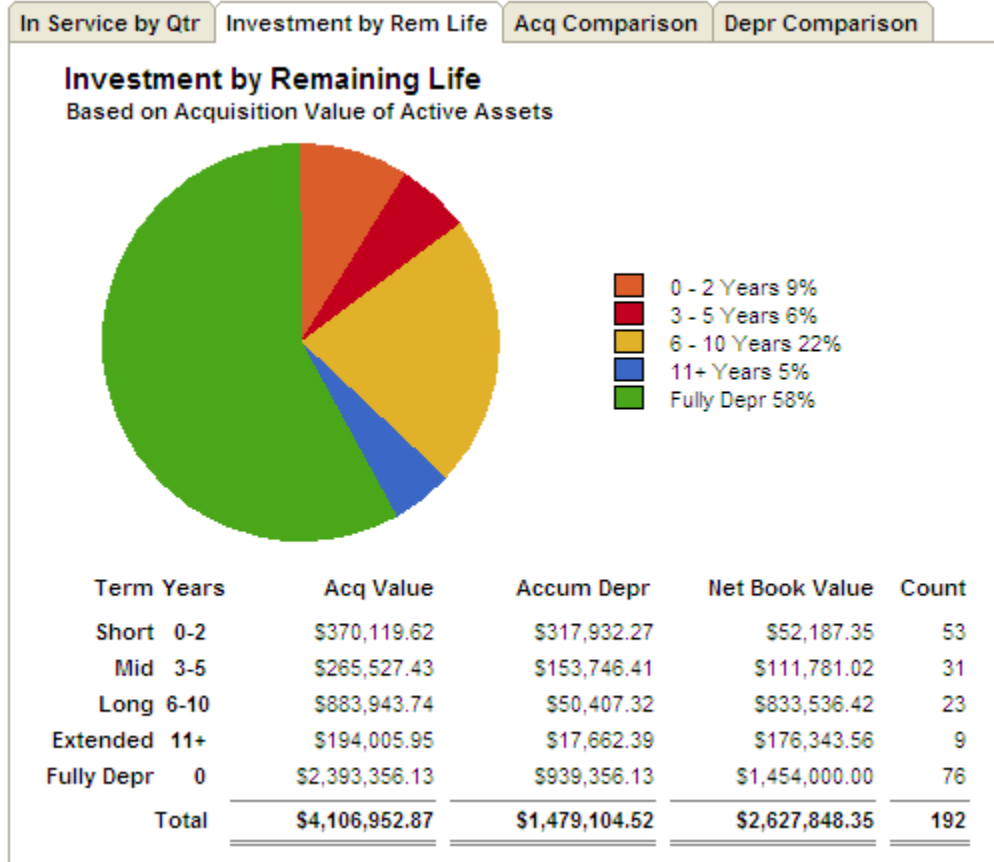
Latest Activity Dates	
Last depreciation run:	12/31/2008
Last period closed:	N/A
Last asset purchased:	System No. 179 on 12/05/2008
Last asset disposed:	System No. 153 on 10/31/2008
Last asset transferred:	N/A

On the right-hand side of the snapshot, you can view four different charts:

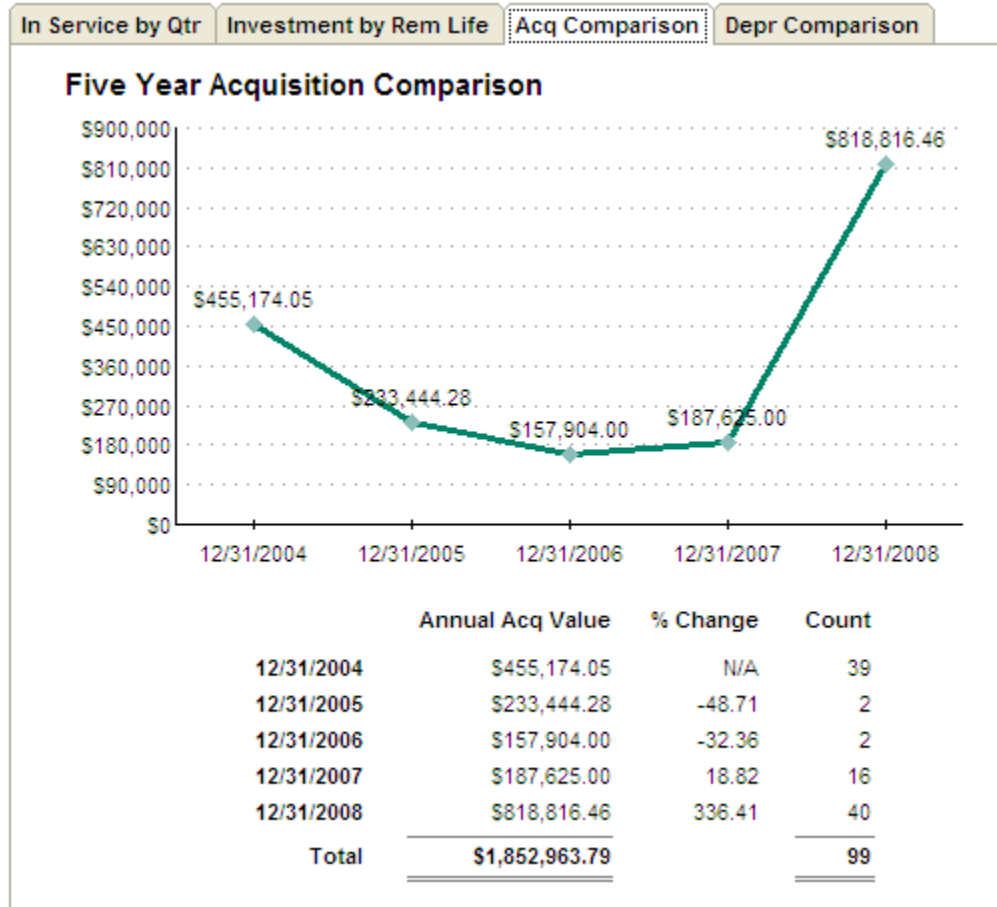
- Placed in Service by Quarter Chart:** Displays the total acquired value of the assets placed in service in each quarter of the current year.



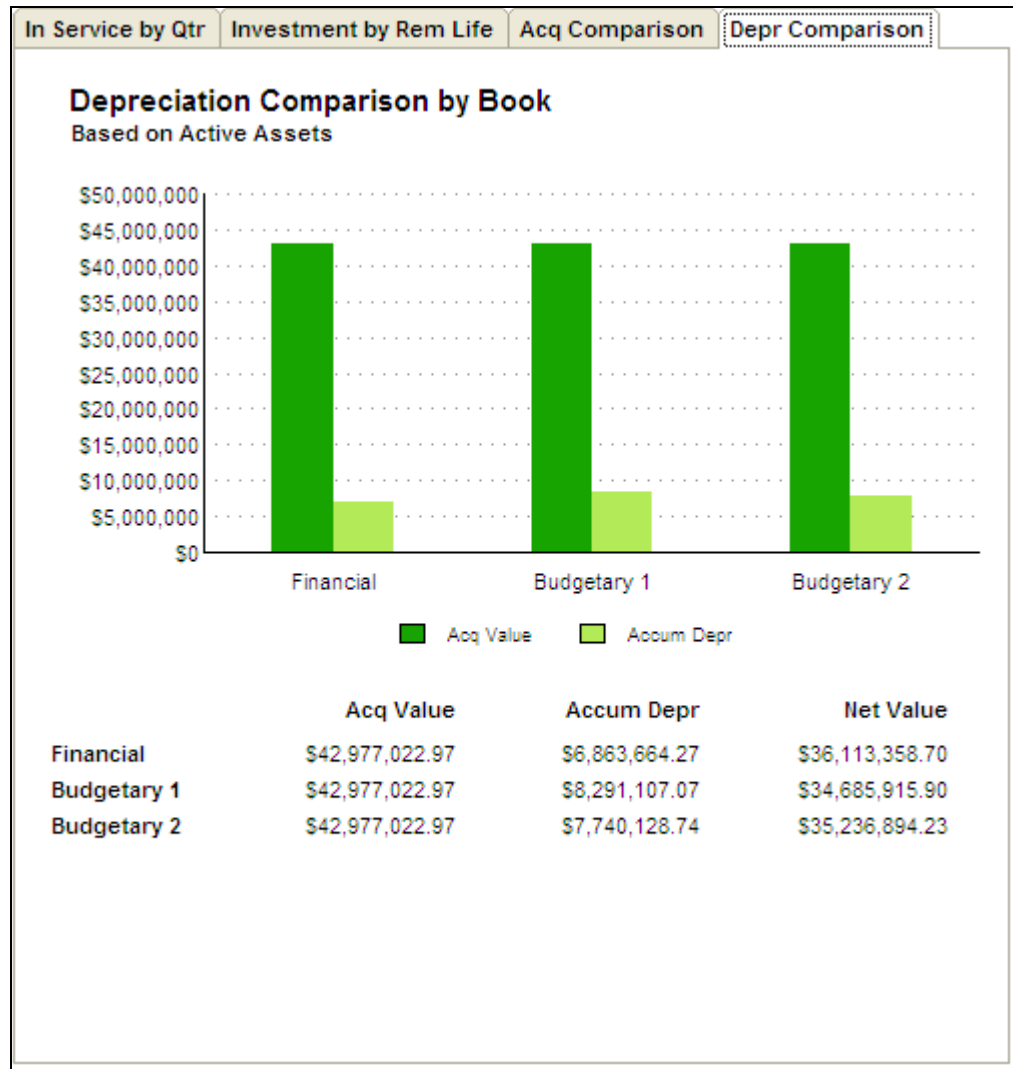
- Investment by Remaining Life Chart:** Groups active assets into four categories, according to how much time remains before the assets are completely depreciated, and compares the total acquired values of each group. A fifth category displays active assets that have been fully depreciated.



- **Five Year Acquisition Comparison Chart:** Shows the total acquired value of assets placed in service in each of the last five fiscal years.



- **Depreciation Comparison by Book Chart:** Compares the total acquired value and total accumulated depreciation for all active assets through the current reporting period for each open FAS book.



Updated Version of Crystal Reports

Standard reports in all versions of Sage FAS products (50, 100, and 500) are now powered by Crystal Reports XI.

In addition, FAS Report Writer now delivers the full power of Crystal Reports XI's sophisticated reporting features. FAS Report Writer users will notice that, while the simple procedure for customizing Standard reports inside the Sage FAS program is still the same, creating completely new reports using the Crystal Designer has become even easier! We have replaced the Report Helper wizard screens with a new report template. When you select Reports/FAS Report Writer/Create New Report from the menu bar, the template opens in Crystal Reports XI with all necessary connections to the Sage FAS

database already made. The template makes it simple to start building your own reports by providing:

- Database connectivity. You are already connected to the Sage FAS database so you can immediately begin adding Sage FAS fields as columns on the report.
- Database views, with all links expertly established, providing you with a meaningful and user-friendly view of information in the database.
- A default name for the report
- The name of the Sage FAS organization
- Columns for system number and extension
- Group selection criteria that filters out unwanted assets. (For example, the report includes only assets with asset extension numbers greater than zero so that asset templates are not included on the report.)

Using the field editor, you can immediately begin dragging and dropping Sage FAS data fields onto the report template! You also have access to a wide range of new and improved features of Crystal Reports XI, such as:

- **Multiple data sources in a single report:** Within a single report, you can combine FAS data with other financial or tax data from a different source, such as a spreadsheet, a relational database, and other supported sources.
- **Formula Workshop:** displays Sage FAS report formulas and provides a toolbar and list of available functions and operators to create new formulas or edit existing ones.
- **Dependency Checker:** allows you to check for errors in formulas and custom functions, validate hyperlinks, and verify database integrity.
- **Parameter Fields:** can be used to prompt a user for input values prior to running report. For example, a user might be prompted to input a Class or range of Acquisition Values to specify the desired assets for your report. Drop down lists of available input values (similar to SmartLists in FAS Asset Accounting) makes this process even simpler. While static prompts are stored as part of the report, in Crystal Reports XI you can use dynamic prompts that automatically retrieve a list of values from the data source to insure that all current values for the field are available in the prompt.
- **Chart Expert:** automatically selects the best chart type to display your data while still allowing complete chart formatting control. Additional Chart types are also available, including Gantt, Gauge, Funnel, and a dynamic drag and drop Cross-Tab report format.
- **Report Explorer:** enables you to display report elements in a tree. Report fields and objects are listed by report section. Selecting them in Report Explorer highlights their location in the report and can be modified by right-clicking within the tree view to display a menu with the available editing options specific to the selected field.

- **Workbench:** create project folders containing multiple reports, making it easy to organize, locate, and run related reports.
- **Custom report templates:** can be created from existing reports and applied to new reports to insure consistent formatting. Templates can include objects such as Fields, Groups, Charts, Summary Fields, Hyperlinks, Bitmaps, Lines, Boxes, and Borders.
- **Format Painter:** can copy absolute or conditional formatting properties from one report object to one or more target objects
- **New Export format options:** including editable RTF, Microsoft Word editable RTF, and Microsoft Excel Data Only
- **Start Page option:** provides intuitive access to actions such as opening existing reports, using a wizard to create new reports, viewing sample reports, searching online help and links to online resources and documentation for Crystal Reports.

New Sage FAS Community

The Sage FAS online community makes it fast and easy for our customers to find needed information or interact with others. The site includes four main content areas – Connect, Solve, Learn and Participate – to help visitors connect with peers, solve issues, learn more about depreciation, tax laws and product capabilities, and participate in the development of future Sage products.

- ***Connect*** – This discussion forum helps customers interact with peers to share information, ask questions, and get answers. You can see who is online and what topics are being discussed, create your own discussions, and easily connect to other Sage online communities.
- ***Solve*** – Containing content for those with immediate issues, the Solve section features the Sage FAS Knowledge Base plus answers to the “10 most common problems” when managing fixed assets. The Sage FAS Knowledge Base includes tips, tricks, and solutions to many common, and not-so-common, questions about fixed assets and Sage FAS products. The expert know-how of Sage support specialists and product designers continually updates the knowledge base with the latest expert information.
- ***Learn*** – The Learn section contains a wealth of Sage FAS product information plus valuable topical content. Included is the Sage FAS Library where you can download installation and user’s guides, the Sage FAS Depreciation Guide, a variety of informative whitepapers, and the latest tax information from both United States and Canadian tax authorities.
- ***Participate*** – This area enables our customers to impact the future of Sage FAS products. Here, community members can participate in product design by commenting on prototypes, participating in polls, answering usability questions, and providing general feedback and input. The section invites product enhancement requests, and it features “Poll of the Month” questions, which can range from business to more personal topics.

To access the Sage FAS Community, select Contact Us from the Help menu. On the Contact Us screen, click the Sage FAS User Community link.

Support Ending and Product Incompatibilities

Support Ending for Novell NetWare Network Edition

This tax update, Sage FAS Fixed Assets 2009.1, is the last release supporting the Novell NetWare platform. Product releases and updates beyond this version will not be available to customers running Sage FAS 100 Fixed Assets - Network Edition on a Novell NetWare platform.

We are currently offering you the option to trade-over to Sage FAS 100 Fixed Assets Network Edition for Windows at no cost. Sage FAS 100 Fixed Assets Network Edition for Windows supports either Windows 2003 Server SP2 or Windows Server 2008. If, however, you would like to upgrade to our FAS 500 product, we are offering a preferred customer discount.

After installing the software, a simple backup and recovery procedure will enable you to move your data from the NetWare platform to the Windows platform. To discuss this trade-over opportunity in more detail with a Sage FAS Support Representative, please call 877-798-0814.

Support for PPT 2700 and PPT 2800 Readers Ending

This tax update, Sage FAS Fixed Assets 2009.1, is the last release supporting the PPT-2700 and PPT-2800 barcode readers. You can find the list of readers supported by Sage FAS at www.sagefas.com/hardware.

Crystal XI Service Pack 4 Incompatible with 2009.1 Tax Update

If you are using Crystal XI and you have updated to Crystal XI Service Pack 4, you must revert to Service Pack 3 for the 2009.1 Sage FAS application to work correctly. For more information, see the System Requirements section in our Installation and Administration guide.